

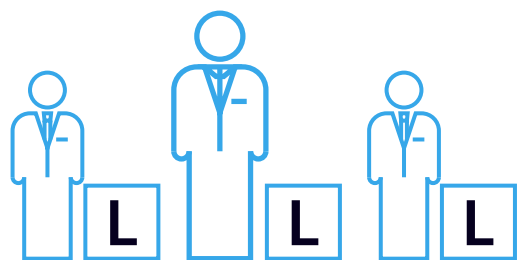
**CJEU**

References of points of EU Law

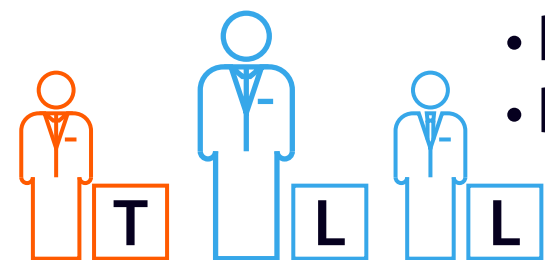
**Court of Appeal Luxembourg**  
(Multinational panel of 5 judges) – President is Mr Klaus Grabinski (DE)

**Arbitration & Mediation Centre**  
• Slovenia (Ljubljana)  
• Portugal (Lisbon)

**Court of First Instance**  
(Multinational panels of 3 judges) – President is Ms Florence Butin (FR)



- Infringement
- Damages
- Provisional & protective measures (including injunctions)
- Counterclaims including revocation



- Revocation / Invalidity
- Declarations of non-infringement

On request from panel or party

**Regional Divisions**

**Local Divisions**

If no local or regional division, actions will default to the Central Division (eg. Malta, Luxembourg)

**Central Division Paris**

Administrative Decisions

**Oppositions for EPs, including UP**

**Grant UPs**

**EPO**

- Nordic – Baltic (Stockholm) for SE, LT, LV & EE

- Germany (Dusseldorf, Hamburg, Mannheim, Munich)
- France (Paris)
- Belgium (Brussels)
- Italy (Milan) \*
- The Netherlands (The Hague)
- Austria (Vienna)
- Finland (Helsinki)
- Denmark (Copenhagen)
- Slovenia (Ljubljana)
- Portugal (Lisbon)
- Ireland (Dublin) \*\*

**Paris Section**

**Munich Section**

- Physics
- Electronics
- Performing operations
- Human necessities

- Mechanical engineering
- Chemistry including pharmaceuticals and Metallurgy

47 = Technical Judges

37 = Legal Judges

\* The Milan Section will open its doors in 2024; in the interim, cases will be heard by the Paris and Munich sections. \*\* Subject to ratification by Ireland expected 2024.